

# SILKSHADE D ALU

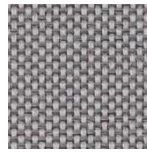
✓ Nice textile appearance

✓ Good glare control in most colors

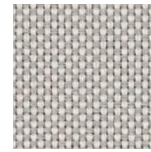
Openness factor: 3%  
 Composition: 100% Trevira CS  
 Weight: 160 g/m<sup>2</sup>  
 Thickness: 0,37 mm  
 Fire reaction: B1 / C1 /  
 NFPA 701



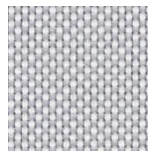
7172 rich black



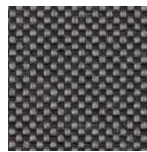
10940 cashmere



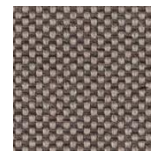
10942 ivory



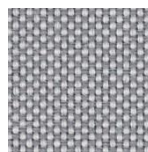
10943 snow



7183 hot stone



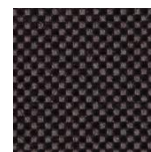
10939 dusty fawn



10941 grey haze



7033 charcoal



10041 espresso



REACH  
compliant



## SUNCONTROL PROPERTIES

	THERMAL FACTORS					OPTICAL FACTORS							
	Fabric		Fabric+Glazing G tot internal			Fabric							
	Rs	Ts	Glazing C G tot	Glazing D G tot	Glazing E G tot	Tv	Tv dir	Tv diff	Tuv	Glare Control Class	Night Privacy Class	Visual Contact Class	Daylight Utilisation Class
7033	54	6	0,38	0,21	0,38	3,3	2,6	0,7	3	3	2	2	1
7172	53	6	0,38	0,22	0,38	3,2	2,8	0,4	3	3	2	2	1
7183	57	6	0,37	0,21	0,37	3,8	2,8	1	4	3	2	2	1
10041	54	6	0,38	0,21	0,38	2,8	2,3	0,5	3	3	2	2	1
10939	54	7	0,38	0,22	0,38	4,5	3,4	1,1	4	3	2	2	1
10940	54	6	0,38	0,21	0,38	4,5	2,6	1,9	4	2	2	2	1
10941	55	7	0,37	0,21	0,38	5,2	2,6	2,6	5	2	2	2	1
10942	54	7	0,38	0,21	0,38	6,6	2,2	4,4	5	1	2	2	1
10943	55	9	0,37	0,20	0,38	8,7	2,8	5,9	8	1	2	1	1

0 Very little effect

2 Moderate effect

3 Good effect

1 Little effect

4 Very good effect

Ts

Solartransmission

Rs

Solarreflection

Glazing C

Double glazing (4/16/4) space filled with air G=0,59 according to EN 14501:2005

Glazing D

Double glazing (4/16/4) with low emissivity coating in position 2, space filled with argon G=0,32 according to EN 14501:2005

Glazing E

Lighttransmission

Tv

Normal/normal light transmittance (direct)

Tv dir

Normal/diffuse light transmittance

Tv diff

UV transmission

Tuv

Data measured according to EN 410:2011 and EN 14500:2008

Classification of thermal and visual characteristics according to EN 14501:2005

Gtot were determined in IDA-ESBO according to EN ISO 52022-3 (reference-case) EN 410 and ISO 15099

TECHNICAL PROPERTIES		
Openness factor	3%	EN 14500
Composition	100% Trevira CS	-
Weight	160 gr/m <sup>2</sup>	EN 12127
Thickness	0,37 mm	EN ISO 5084
Fire classifications		
Europe	Bs1d0 C1	UNE EN 13501 EN 13773
France	M1*	NF P92-503
Italy		UNI 9177
Germany	B1	DIN 4102
UK		BS 5867
USA	Pass	NFPA 701
Wheelmark		IMO resolution MSC.307(88)-(2010 FTP Code) and IMO MSC/Circ.1102
Acoustic Absorption	E-200 / $\alpha_w = 0,3$ / NRC = 0,25	EN 354/EN 11654/ASTM C423
Lightfastness	Min. 5-6/8	EN ISO 105 B02
Breaking resistance	Warp: >95 daN / Weft: >60 daN	EN ISO 13934
Elongation to break	Warp: approx. 25% Weft: approx. 25%	EN ISO 13934
Tearing strength	-	EN ISO 13937
SundaHus	B	sundahus.se
Byggsvarubedomningen	accepteras	byggvarubedomningen.se

\*confirmed by Trevira GmbH

WIDTH: 240 / 290 cm

ROLL SIZE: 40 m

**MANUFACTURING GUIDANCE:**

Fabric length to drop

Cut with ultrasonic

**CARE INSTRUCTIONS:**

Vacuum clean for regular maintenance

Brush off

Do not wash, rub or steam

Do not dry clean

SUITABLE FOR MOIST ATMOSPHERE: No

**ENVIRONMENT**

The SCS Indoor Advantage™ Gold certificate states a test regarding harmful emissions of fabrics and products in the interior. Fabrics certified by SCS contribute to a better room air quality. It is comparable to Greenguard certificate